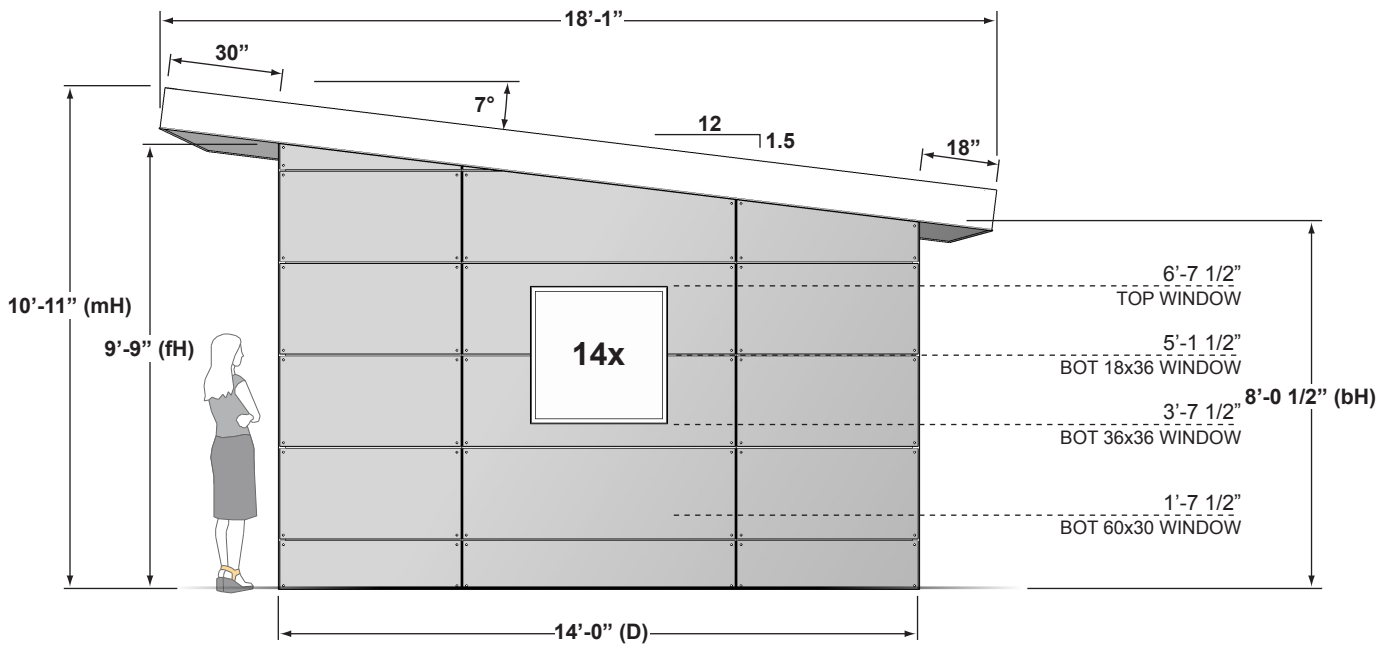
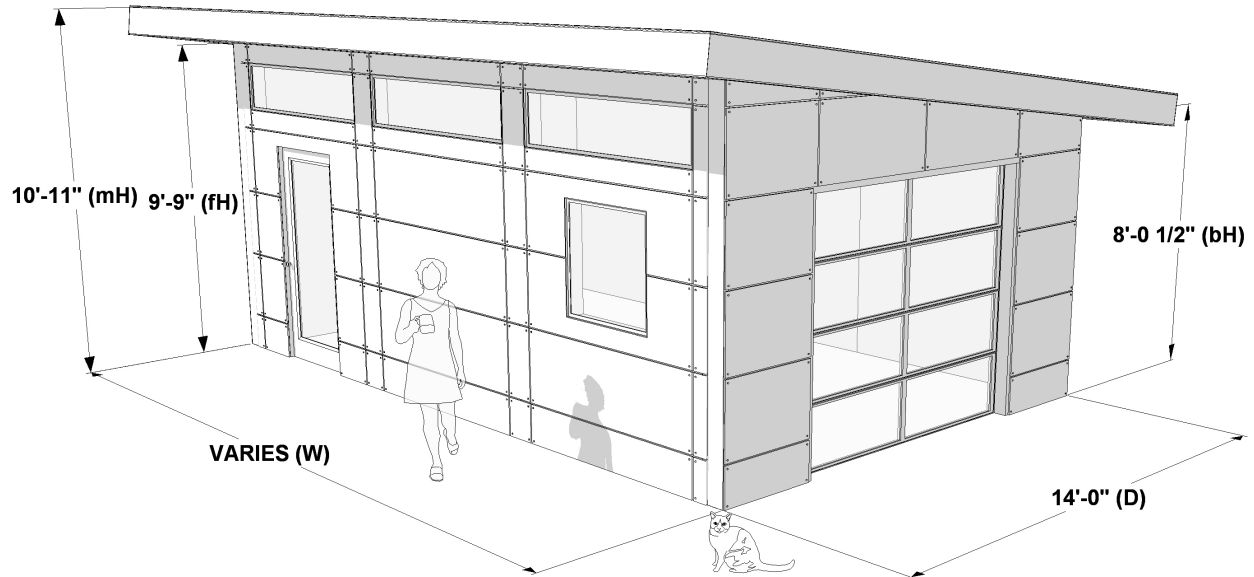


SUMMIT SERIES

PRODUCT GUIDE
v1 - JANUARY 13, 2016



(D) = SHED DEPTH | (W) = SHED WIDTH | (mH) = MAX ROOF HEIGHT | (fH) = FRONT WALL HEIGHT | (bH) = BACK WALL HEIGHT

14x SUMMIT SERIES

2x6 wall construction

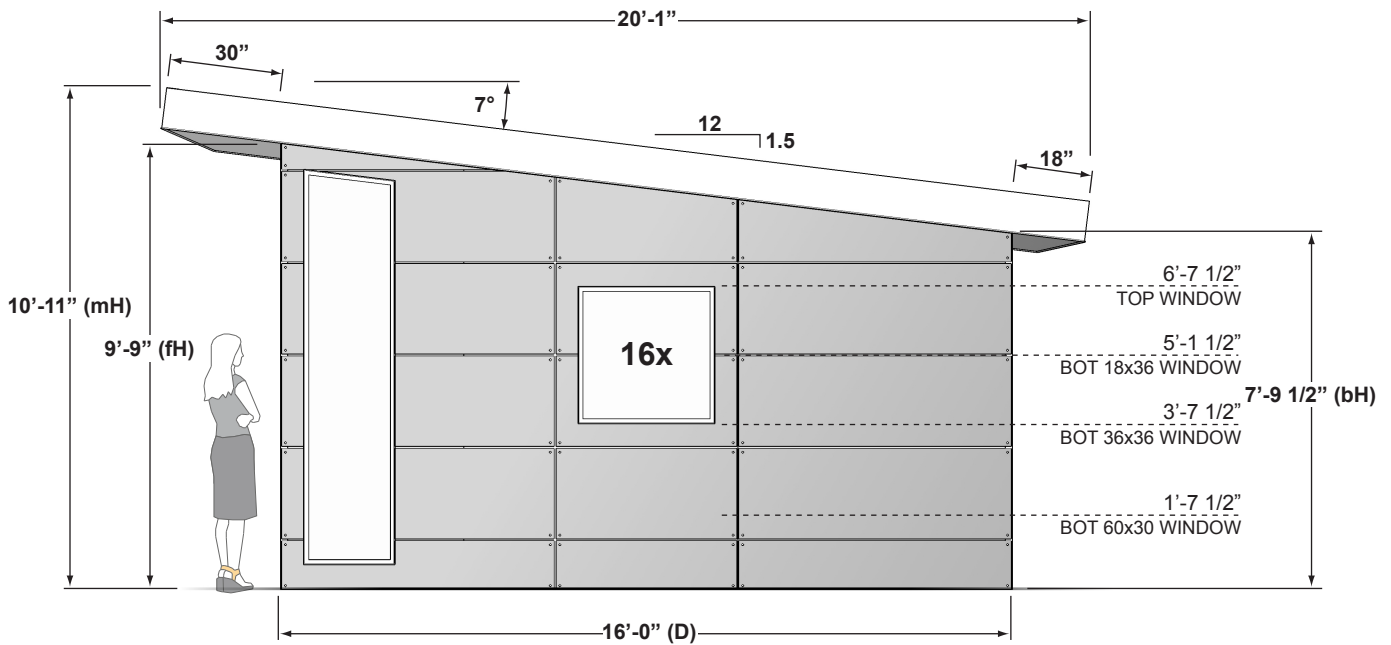
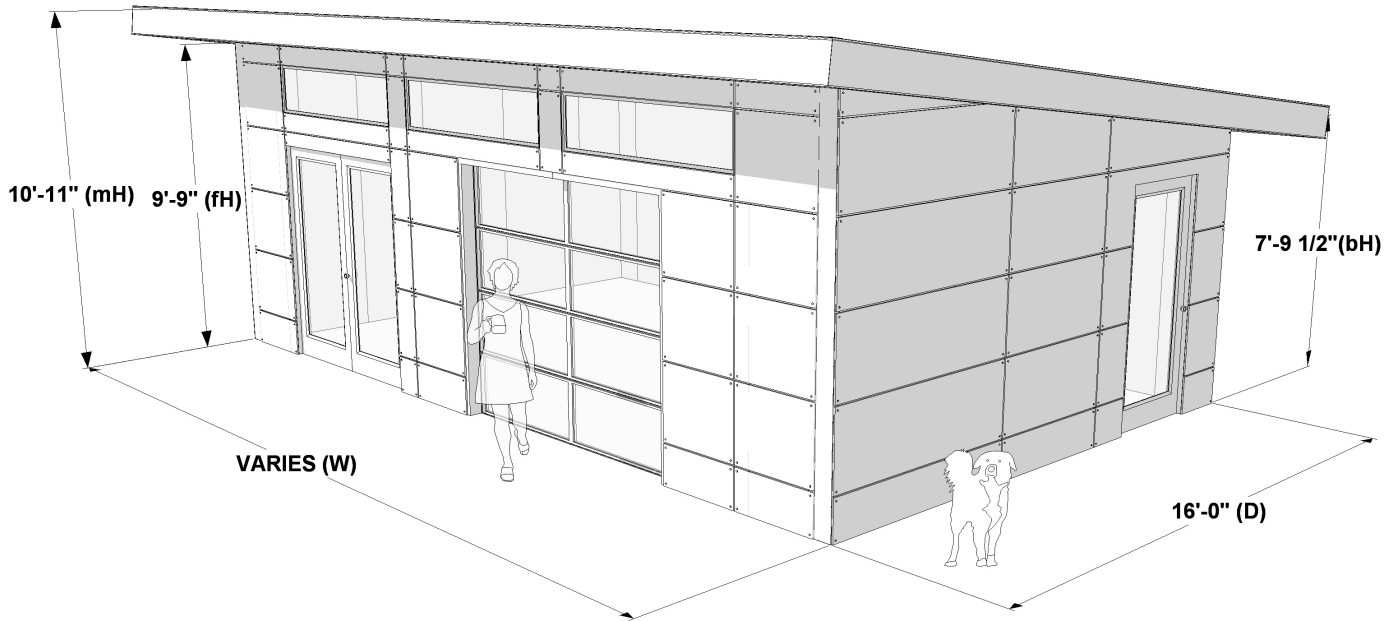
9 1/4" LVL roof @ 30 psf snow load

D	W	mH	fH	bH	FOOTPRINT SQ FT	INTERIOR	
						FINISHED SQ FT	~WEIGHT (LBS)
14	18	10'-11"	9'-9"	8'-0 1/2"	252	221	7056
14	22	10'-11"	9'-9"	8'-0 1/2"	308	273	8624
14	26	10'-11"	9'-9"	8'-0 1/2"	364	325	10192
14	30	10'-11"	9'-9"	8'-0 1/2"	420	377	11760

*Height dimensions DO NOT include foundation

*Dimensions rounded to nearest 1/2"

*Weights are approximate and will vary by shed configuration



(D) = SHED DEPTH | (W) = SHED WIDTH | (mH) = MAX ROOF HEIGHT | (fH) = FRONT WALL HEIGHT | (bH) = BACK WALL HEIGHT

16x SUMMIT SERIES

2x6 wall construction

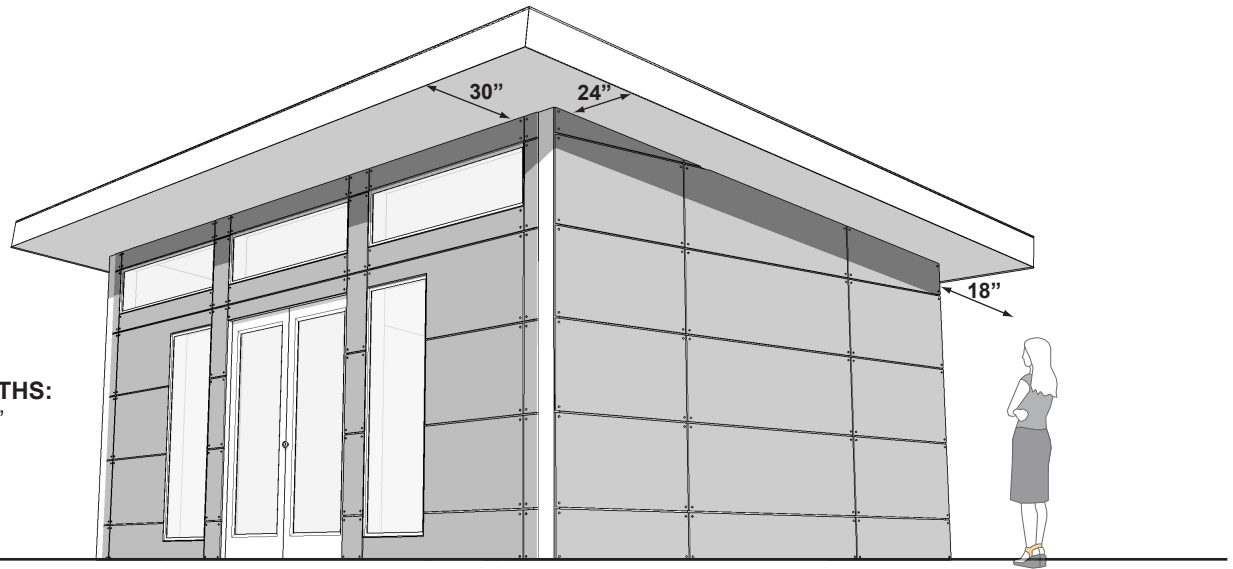
9 1/4" LVL roof @ 30 psf snow load

	FOOTPRINT					INTERIOR	
	D	W	mH	fH	bH	SQ FT	FINISHED SQ FT
16	18	10'-11"	9'-9"	7'-9 1/2"	288	255	8064
16	22	10'-11"	9'-9"	7'-9 1/2"	352	315	9856
16	26	10'-11"	9'-9"	7'-9 1/2"	416	375	11648
16	30	10'-11"	9'-9"	7'-9 1/2"	480	435	13440
16	34	10'-11"	9'-9"	7'-9 1/2"	544	495	15232

*Height dimensions DO NOT include foundation

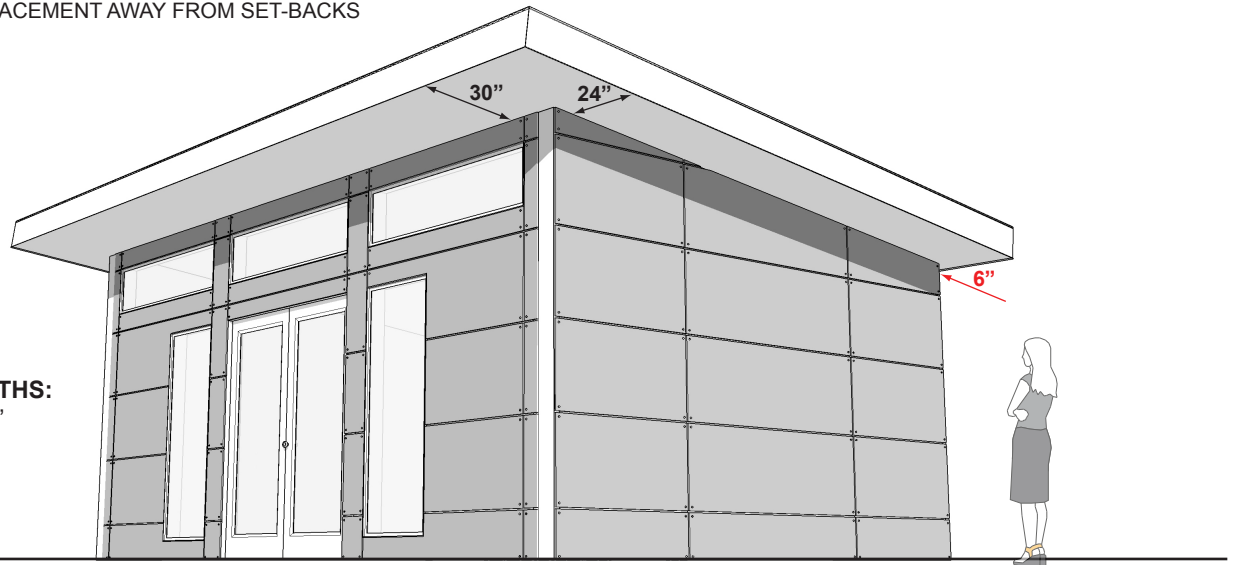
*Dimensions rounded to nearest 1/2"

*Weights are approximate and will vary by shed configuration



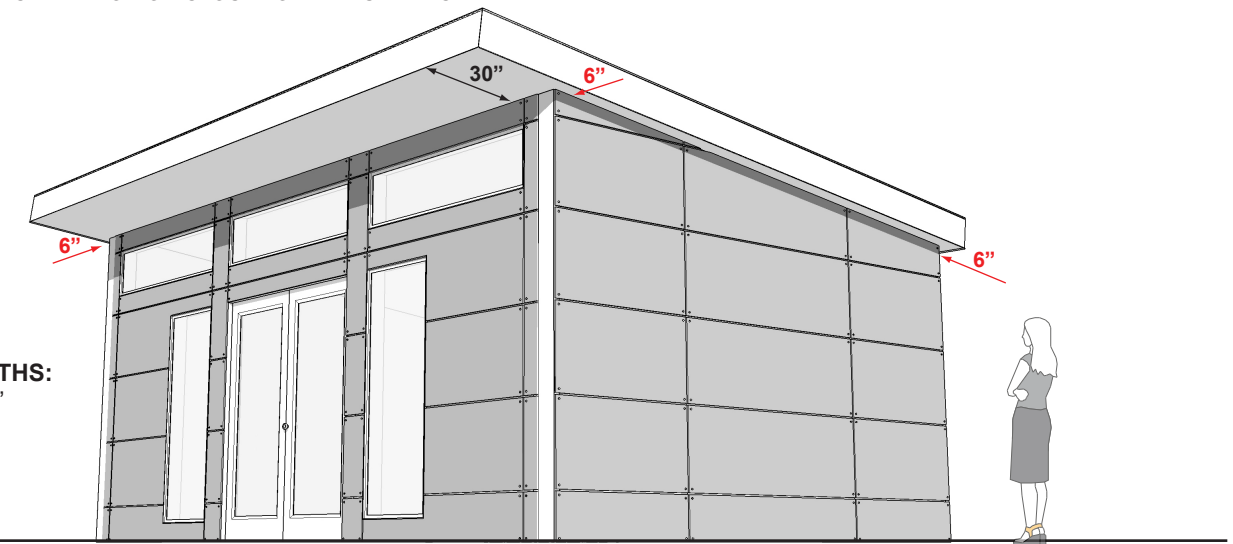
EAVE LENGTHS:
 FRONT = 30"
 SIDE = 24"
 BACK = 18"

STANDARD LENGTH ROOF
 BEST FOR PLACEMENT AWAY FROM SET-BACKS



EAVE LENGTHS:
 FRONT = 30"
 SIDE = 24"
 BACK = 6"

SHORTENED BACK EAVES
 BEST FOR PLACEMENT ON OR CLOSE TO REAR SET-BACK



EAVE LENGTHS:
 FRONT = 30"
 SIDE = 6"
 BACK = 6"

SHORTENED BACK AND SIDE EAVES
 BEST FOR PLACEMENT ON OR CLOSE TO REAR AND SIDE SET-BACKS